

ELANCO



Wellhead Protection Program

How it all Started

- In the 80's there was a proposed Hazardous Waste Dump site at Narvon Mine, which is the location of Headwaters for ELANCO
- Citizen group formed to fight proposed dump
- EPA, DER involved
- Lot of meetings, fund raisers
- Area Local, State and US Officials involved

Narvon Mine



Wellhead Protection Committee Formed

- In May 1990, EPA approached Earl and East Earl with proposed project to develop regional wellhead program in Eastern Lancaster Co.
- Positive response from Townships, EPA asked New Holland and Terre Hill Borough's to join.
- The four municipalities formed the ELCWPC
- Aug. 1991, the WHPA delineations completed for the four water systems.

ELCWPC

- “Fracture Trace Analysis For Wellhead Protection Area Delineation, East Lancaster County, Pennsylvania,” prepared by Lockheed Engineering & Sciences Co., PA DER, and PSC E&C.
- Sept. 1991, PA DER awarded Grant funding to ELCWPC to develop management program for WHPA.

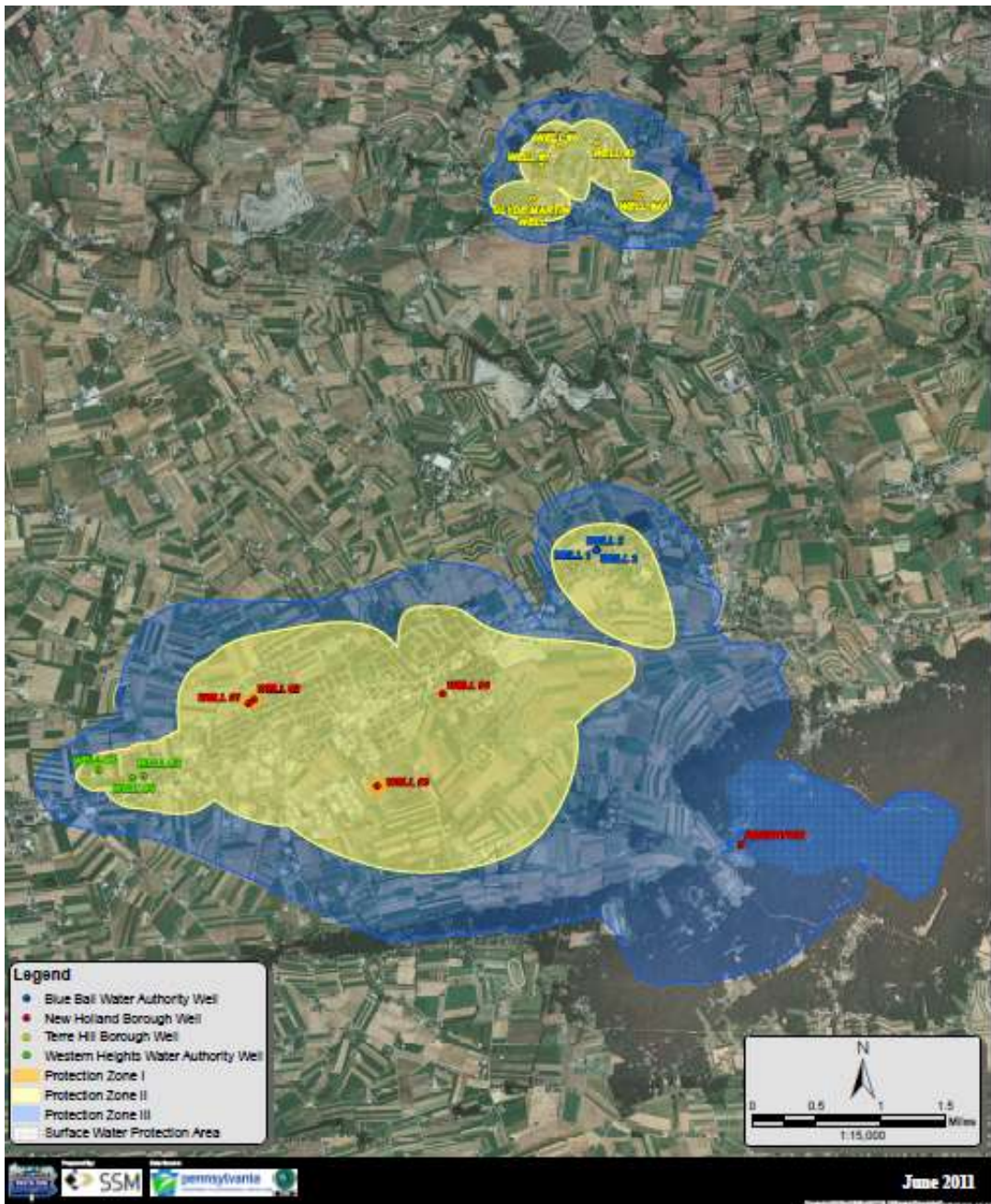
ELCWPC

- Most of Protection areas are in Farmland.
- Program was shelved, Twp. Supervisors did not want to impose restrictions on farmers.
- Program sat on shelf until 2006. Applied for and received a \$5000 Grant from WREN
- Purchased Groundwater, Surface water models, made up brochures and placemats.

ELCWPC

- 2007, meet with all four municipalities, and PRWA, interest in completing WHPA. Formed new committee. Current Twp. Supervisors were ready to finalize WHPA.
- Lancaster County Planning, PRWA and DEP all became part of the committee.
- Meet with DEP, approved for funding, SWP DEPs SWP engineer, SSM did delineations for the region
- Took Groundwater and Surface water models to One Room Schools, very accepted to program.

Combined zones ELANCO Source Water Protection Map











ELCSWPC

- Set up Groundwater and surface water models at the Annual Terre Hill Days held in July
- All four municipalities, Lancaster County Planning and engineering firms participate in manning the booth
- Display posters and distribute brochures



ELCSWPC

- Applied for and received a \$5000 WREN Grant in 2012 (currently in cycle)
- Will form SWEET (Source Water Protection Education Team)
- Develop New Brochures (Local High School Students are currently designing brochure)
- Will purchase and install Emergency Response signs on major roads along with EMS training.

ELCSWPC

- Hold SWP Poster contest involving all Public and Private schools. Poster winner will be put in Kiosks.
- Build Water Drop Kiosks and install one each at Terre Hill Park, Welsh Mountain Park, New Holland Park and Earl Twp. Municipal Building.
- Continue SWP education in local schools.

Cooperation

- The Four Municipalities have gone on to jointly develop
- A Comprehensive Plan
- A Park and Rec. Plan
- And are working towards a Regional Police Department
- East Earl and Terre Hill work together in all aspects of Public Works.

Finally!

In September 2012

All four Municipalities received
DEP Approved Source Water
Protection Plans

Special Thanks to DEP, PRWA, WREN,
Lancaster County Planning and the committee
people for making this possible.

DEP Approved Source Water Protection Plans

